

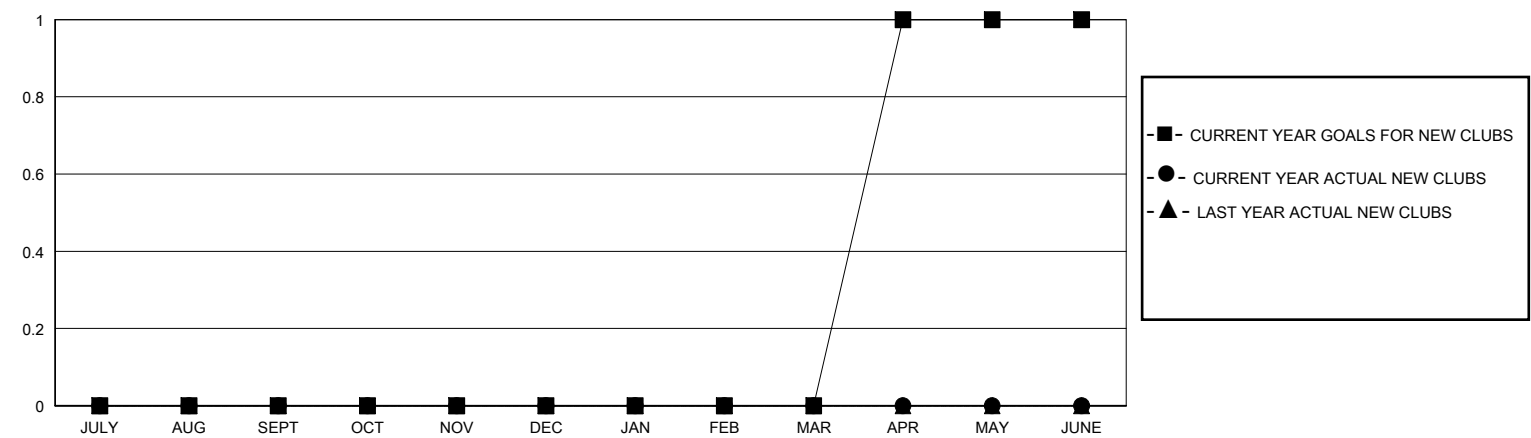
MONTHLY MEMBERSHIP PROGRESS REPORT

District 11 B2

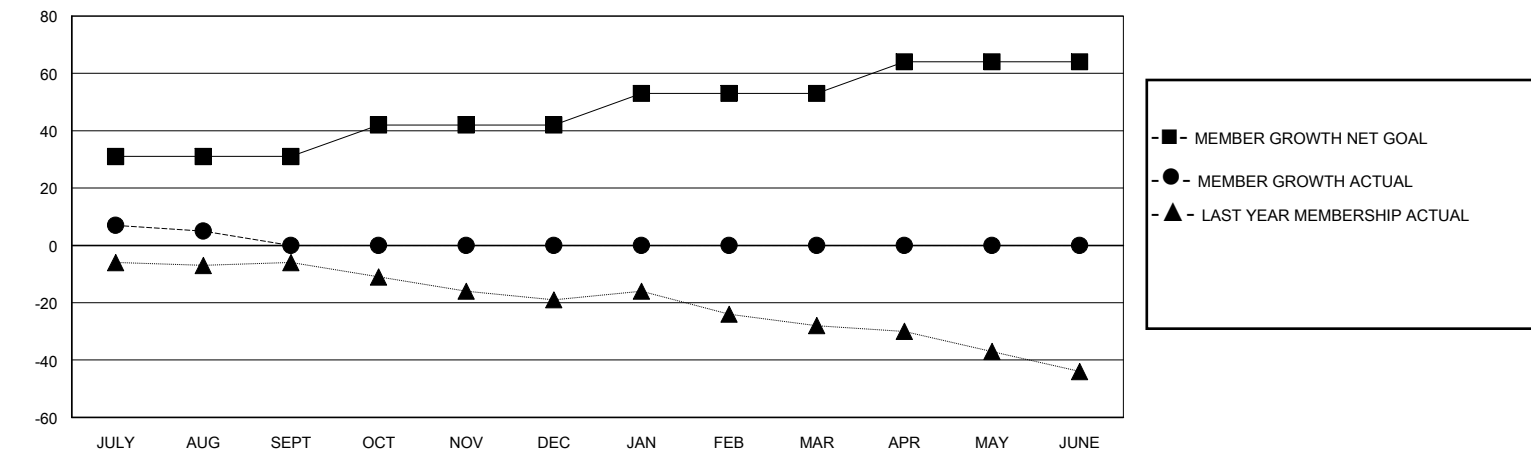
Results as of: 9/30/2025

GMT:				LOCATION MICHIGAN				GMT CA			
Clubs				Members							
RESULTS FOR 2025-2026				RESULTS FOR 2025-2026							
QUARTER	NEW CLUB GOAL	NEW CLUBS	DROPPED CLUBS	QUARTER	MEMBER GROWTH NET GOAL	MEMBER GROWTH ACTUAL	DROPPED MEMBERS ACTUAL (including transfers)				
JULY/AUG/SEPT	0	0	0	JULY/AUG/SEPT	31	18	18				
OCT/NOV/DEC	0	0	0	OCT/NOV/DEC	11	0	0				
JAN/FEB/MAR	0	0	0	JAN/FEB/MAR	11	0	0				
APR/MAY/JUNE	1	0	0	APR/MAY/JUNE	11	0	0				

GOALS AND ACTUAL NEW CLUBS CUMULATIVE



GOALS AND ACTUAL MEMBERS CUMULATIVE



DROPPED CLUBS: 0		10 CLUBS OF 31 ADDED 1 OR MORE NEW MEMBERS	<u>GENDER DISTRIBUTION</u>	
			MALE	490 (63.31%)
			FEMALE	283 (36.56%)
<u>DROPPED MEMBERS</u>		<a href="#">CLICK HERE FOR CUMULATIVE MEMBERSHIP DATA</a>		
DECEASED	5		TOTAL FAMILY UNIT MEMBERS 199	
CLUB CANCELLED	0			
OTHER	13		FAMILY MEMBERS PAYING HALF DUES 100	
TOTAL	18			